

# MONTHLY MEMBERSHIP PROGRESS REPORT

LOCATION NEPAL

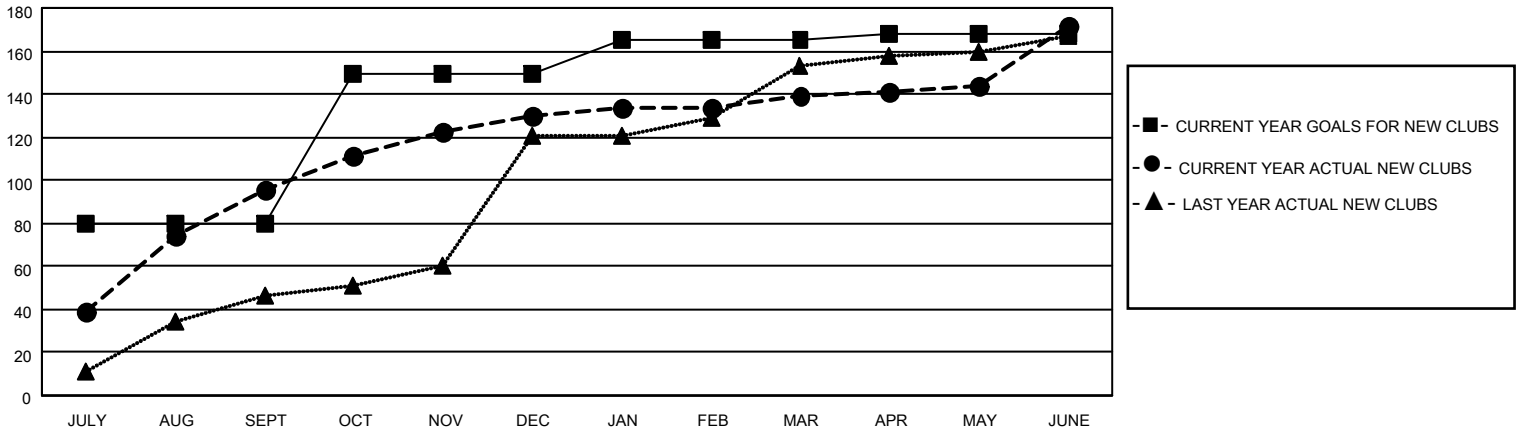
District 325B2

Results as of: 6/30/2022

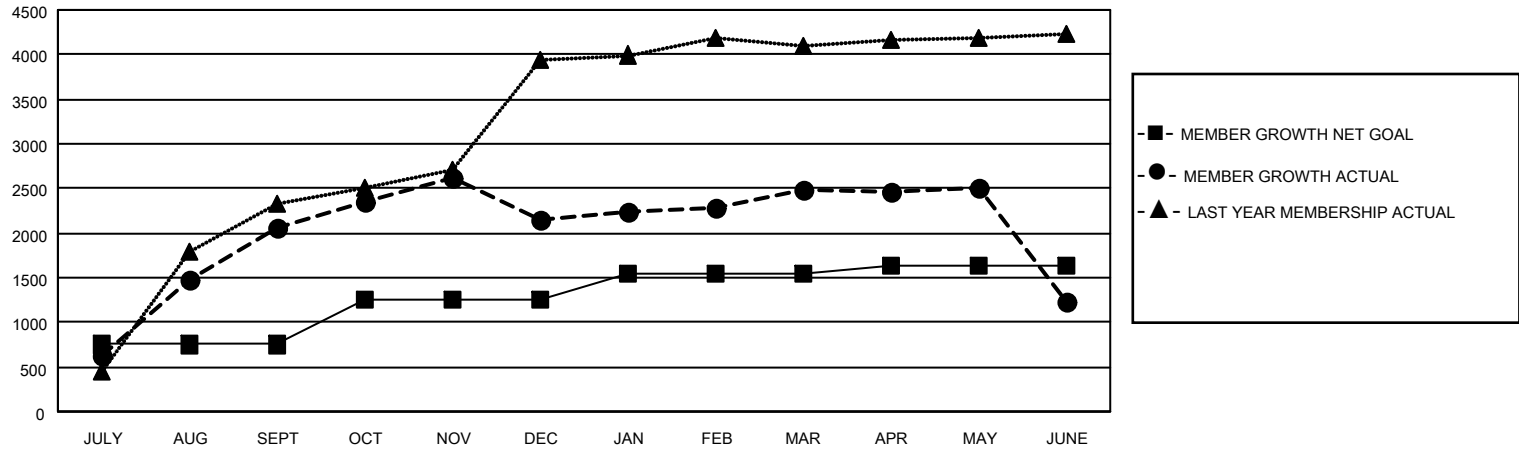
Clubs			
RESULTS FOR 2021-2022			
QUARTER	NEW CLUB GOAL	NEW CLUBS	DROPPED CLUBS
JULY/AUG/SEPT	80	96	14
OCT/NOV/DEC	70	34	10
JAN/FEB/MAR	15	9	3
APR/MAY/JUNE	3	33	43

Members			
RESULTS FOR 2021-2022			
QUARTER	MEMBER GROWTH NET GOAL	MEMBER GROWTH ACTUAL	DROPPED MEMBERS ACTUAL (including transfers)
JULY/AUG/SEPT	750	2944	863
OCT/NOV/DEC	500	952	853
JAN/FEB/MAR	300	638	270
APR/MAY/JUNE	90	1324	2,563

**GOALS AND ACTUAL NEW CLUBS CUMULATIVE**



**GOALS AND ACTUAL MEMBERS CUMULATIVE**



**DROPPED CLUBS: 70**

**463 CLUBS OF 696 ADDED 1 OR MORE NEW MEMBERS**

**GENDER DISTRIBUTION**

**DROPPED MEMBERS**

DECEASED	22
CLUB CANCELLED	1,506
OTHER	3,022
<b>TOTAL</b>	<b>4,550</b>

[CLICK HERE FOR CUMULATIVE MEMBERSHIP DATA](#)

MALE	10,191 (71.86%)
FEMALE	3,987 (28.12%)
NON BINARY	0 (0.00%)
PREFER NOT TO ANSWER	3 (0.02%)

TOTAL FAMILY UNIT MEMBERS 12,290

FAMILY MEMBERS PAYING HALF DUES 8,279